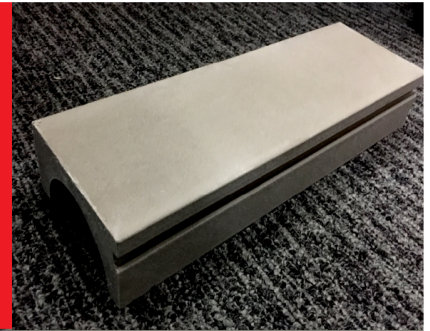




SCG Trim, Standard-Grooved Series

Size 10x300x5 cm, Cement Color



- Perfect line and smooth texture with no cracks
- Light weight and easy to cut and drill
- Safe installation with dry process using screw system
- Strong and durable with X-TRUSION Technology





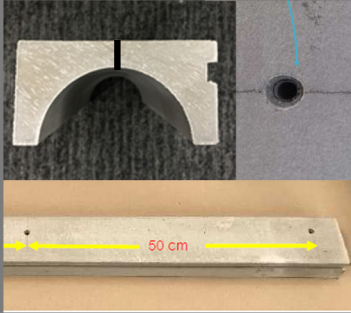
SCG Trim, Standard-Grooved Series

SCG Trim, Standard-Grooved Series is readily made of fiber cement material with standard manufacturing. Every dimension contains beautiful smooth surface with sharp edge and cracks-free. Light weight and easy to cut. Installation is easy with dry process leaving fast and clean work. With screw installation, cement filling is not needed. Also, attach molding into wall with sharp steel isn't necessary so risk of going through is zero. Helps to reduce rework in the future as well.

Size	5 x 10 cm
Length	300 cm
Weight	12.8 kg/pc
Color	Cement

Installation of SCG Trim

How to install



Make a hole on SCG trim with drill bits size 7 mm. To prevent breakage, do not use a hammering action. When hole is made, use drill bits size 10 mm to widen it 5 mm deep, to prepare for screw.



Use chalk line reel to indicate line. Then, place SCG Trim to the wall and use rotary drill with drill bits size 6.5 mm to make a hole on the concrete wall following the hole on the trim. Try to avoid touching the trim.



Insert needle point screw no. 10 (3 inches long) to plastic insert no. 7 before securing it into the hole. Hammer the plastic insert into the wall leaving the head in 1-2 cm.



Push the plastic insert with drill until it extends. The screw will be buried into the wall 2 mm as shown.



To conceal screw head, use wood filler. Leave to dry and rub it with sandpaper until the surface is smooth and even with the trim surface.



Finish up the work, especially in the corner and joint between the trim and wall with SCG Wood Substitute Acrylic Paint Sealant.

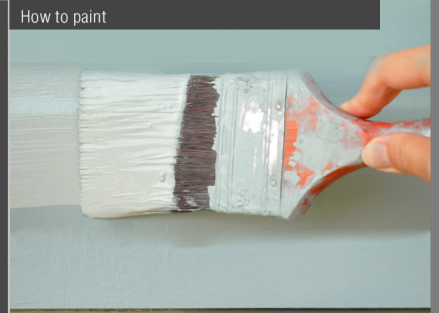
How to finishing at the corner



1. 90 degree angle cutting
Mix concrete to fill the trim using brick trowel. Then, finish up the work.



2. 45 degree angle cutting
Install and conceal joint with wood filler and SCG Wood Substitute Acrylic Paint Sealant.



How to paint
Painting: It is recommended to use the primer paint first and paint with SCG Acrylic Paint for Fiber Cement twice.
Remark: Using oil paint with fiber cement material is not recommended.

- WARNING**
- Never use as a structure for buildings, support, or other purposes. SCG Smartwood must be installed in compliance with the installation manual, and only standardized equipment from the manufacturer can be used
 - Never ingest or swallow. Furthermore, the dust created from cutting, grinding, drilling or injecting the product should not be inhaled.
 - Do not use in areas that are wet or moist at all times.
 - Do not use for flooring raised more than 50 cm or more from the ground.
- CAUTION**
- SCG Smartwood products have been designed with directions for use as suitable for usage conditions in Thailand only. Use outside Thailand is considered a direct responsibility of the construction designer, controller and installer.
 - Wood stain products contain chemical substance and cannot be swallowed, ingested or come into contact with the eyes.
 - While working, use standardized personal safety equipment; tightly close containers after work and keep away from the hands of children.
 - If any skin irritation occurs with contact, hurry to rinse with water many times and see a doctor without delay.
 - If swallowed or ingested, do not induce vomiting. Drink plenty of clean water in order to dilute the chemical and see a doctor without delay.
 - Specifications for installation are only preliminary suggestions for general usage. The installation methods and structures used should be considered in line with EIT Standard 1015-40 for Steel Structured Buildings and the design specifications in Ministerial Regulations, 6th Edition (1984) issued pursuant to the tenets of the Act of 1979.
 - Using the products outside of the usage specified in this document is considered a direct responsibility of the construction designer and controller.
 - The installation manual is subject to change
 - Construction designers, controllers and installers must check to determine whether the installation manual in their possession is the most recent edition. If there is any doubt, the edition can be checked at www.scgbuildingmaterials.com

MHB-S-C41-C005-6104 All content, design, and layout are Copyright © 2018, SCG Cement-Building Materials All Rights Reserved, Reproduction in whole or part in any form or medium without specific written permission is prohibited.



SCG Contact Center 02-586-2222

Email : contact@scg.com, www.scgbuildingmaterials.com