

D'COR



UNIQUE THE SPACE

Building exclusive space with unlimited aesthetic imagination using **SCG Fiber cement decorative material** made from integration of Portland cement, silica and cellulose fiber using Firm&Flex along with X-trusion technology, which helps the product more durable and suitable for both exterior as well as interior.



D'COR

UNIQUE THE SPACE



SCG Modeena

Striking Organize Pattern

Stunning the space with a striking organize pattern both systematic and intricate pattern. Represent in natural wood look moreover, in modern style. Also make it more well neat with a none screw installation.

Size (cm.)	Weight (kg./pc.)
30 x 150 x 2.5	10.4
30 x 300 x 2.5	20.8

* The following information relates to only M1 series.
For more details, please scan QR Code



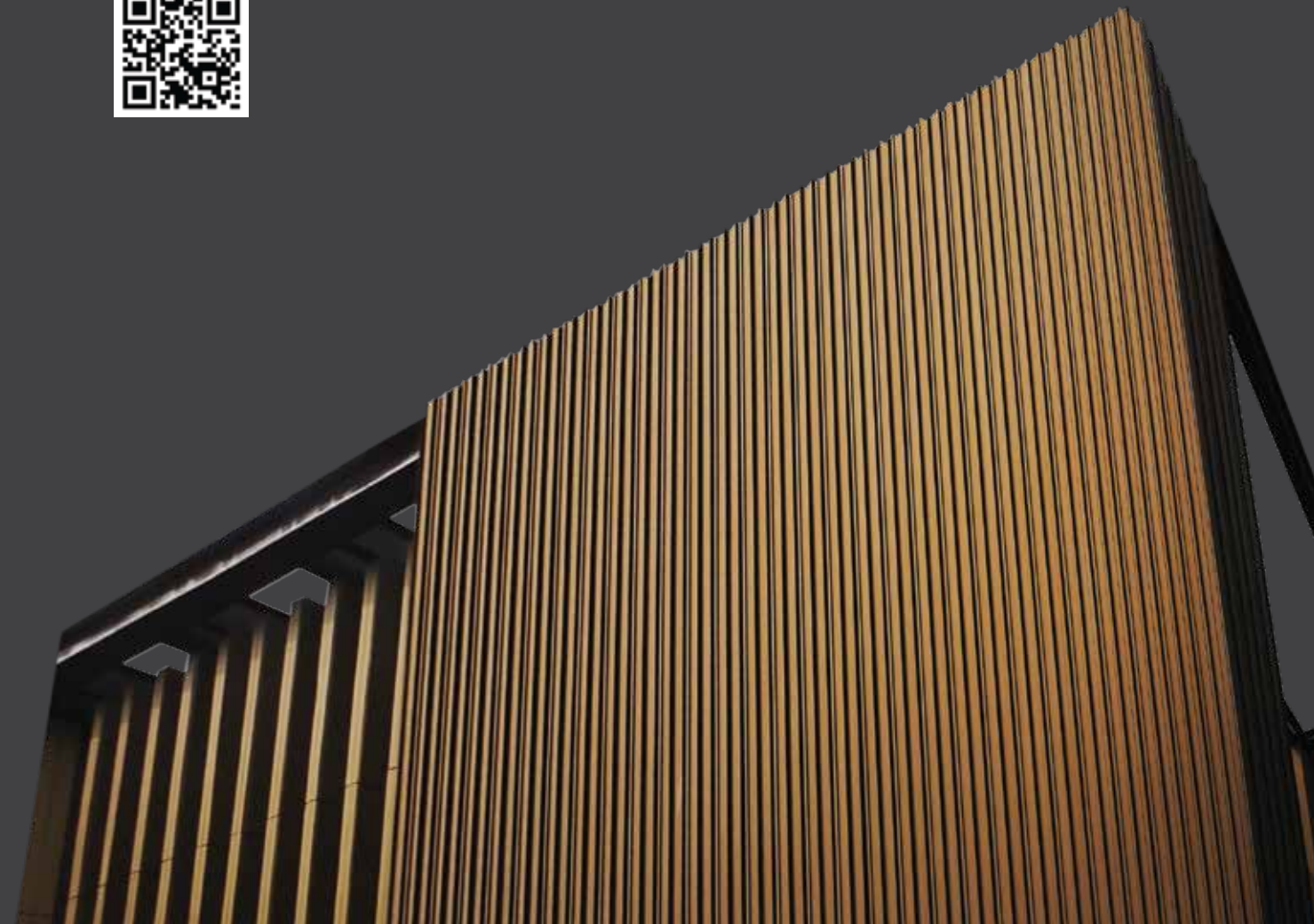
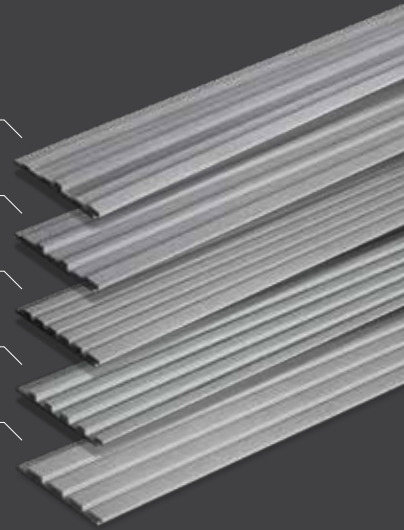
M1

M2

M3

M4

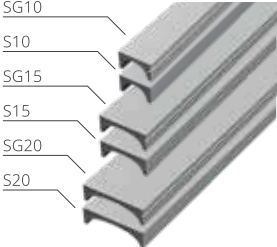
M5



SCG Trim

Standard Neat Ornament

Well neat the space , fulfill the surface with a linear trimming decorative material. Comes with a groove detail profiling to ensure the most efficient use and worry-free to design a picturesque wall.



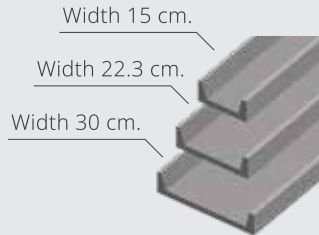
Size (cm.)	Weight (kg./pc.)
10 x 300 x 5	12.8
15 x 300 x 5	16.8
20 x 300 x 5	22.3

* The following information relates to only SG series.
For more details, please scan QR Code

SCG C-Channel

Genuine Virtual Steel

Surpass all the steel material restrictions to express the industrial look of steel with a genuine virtual steel decoration material. More affordable, easier installation moreover with its solid durable form.



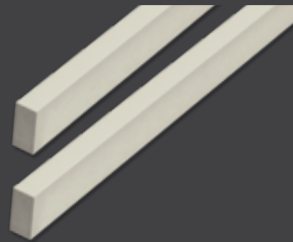
Size (cm.)	Weight (kg./pc.)
15 x 5 x 1.2 x 300	14
22.3 x 5 x 1.2 x 300	18.33
30 x 5 x 1.2 x 300	23

SCG Line

Unrivaled Artificial Timber

Unlimited the aesthetic imagination wood panel with a superior durable , adaptable wood stick. And make it more stylish with a timber pattern paint finishing.

Size (cm.)	Weight (kg./pc.)
5 x 300 x 2.5	5.7





SCG Line



SCG C-Channel

SCG Line



Durable



Weather resistant



Termite free



Asbestos free

WARNING

• Never use as a structure for buildings, support, or other purposes. SCG Smartwood must be installed in compliance with the installation manual, and only standardized equipment from the manufacturer can be used. • Never ingest or swallow. Furthermore, the dust created from cutting, grinding, drilling or injecting the product should not be inhaled. • Do not use in areas that are wet or moist at all times. • Do not use for flooring raised more than 50 cm or more from the ground.

CAUTION

• SCG Smartwood products have been designed with directions for use as suitable for usage conditions in Thailand only. Use outside Thailand is considered a direct responsibility of the construction designer, controller and installer. • Wood stain products contain chemical substance and cannot be swallowed, ingested or come into contact with the eyes. • While working, use standardized personal safety equipment; tightly close containers after work and keep away from the hands of children. • If any skin irritation occurs with contact, hurry to rinse with water many times and see a doctor without delay. • If swallowed or ingested, do not induce vomiting. Drink plenty of clean water in order to dilute the chemical and see a doctor without delay. • Specifications for installation are only preliminary suggestions for general usage. The installation methods and structures used should be considered in line with EIT Standard 1015-40 for Steel Structured Buildings and the design specifications in Ministerial Regulations, 6th Edition (1984) issued pursuant to the tenets of the Act of 1979. • Using the products outside of the usage specified in this document is considered a direct responsibility of the construction designer and controller. • The installation manual is subject to change. Construction designers, controllers and installers must check to determine whether the installation manual in their possession is the most recent edition. If there is any doubt, the edition can be checked at www.scgbuildingmaterials.com

CW-WS-D-C001/6204 *Color shade may vary from real product due to production and printing process

All Content, design, and layout are Copyright © 2019, SCG Cement-Building Materials All Rights Reserved, Reproduction in whole or part in any form or medium without specific written permission is prohibited.



SCG Contact Center 02-586-2222

Email : contact@scg.com, www.scgbuildingmaterials.com